



Biological and Cultural Surveys

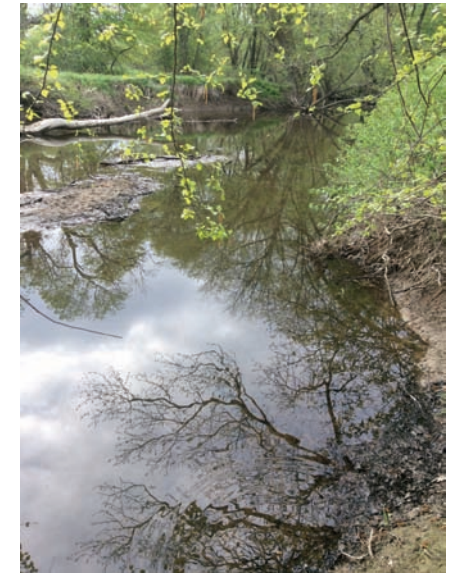
Valley Lateral Project

Environmental Surveys

- Biological and cultural resource surveys are conducted during the route planning stage to identify potentially sensitive resources.
- Examples of typical field surveys include wetlands and water bodies, rare species and cultural resources.
- Field-level reviews can assist in:
 - Reducing wetland crossing lengths
 - Reducing number of water body crossings
 - Planning perpendicular water body crossings
 - Maintaining vegetative buffers at parallel streams
 - Avoiding cultural resource sites



Land Use



Water Bodies



Rare Species



Wetlands



Cultural Resources