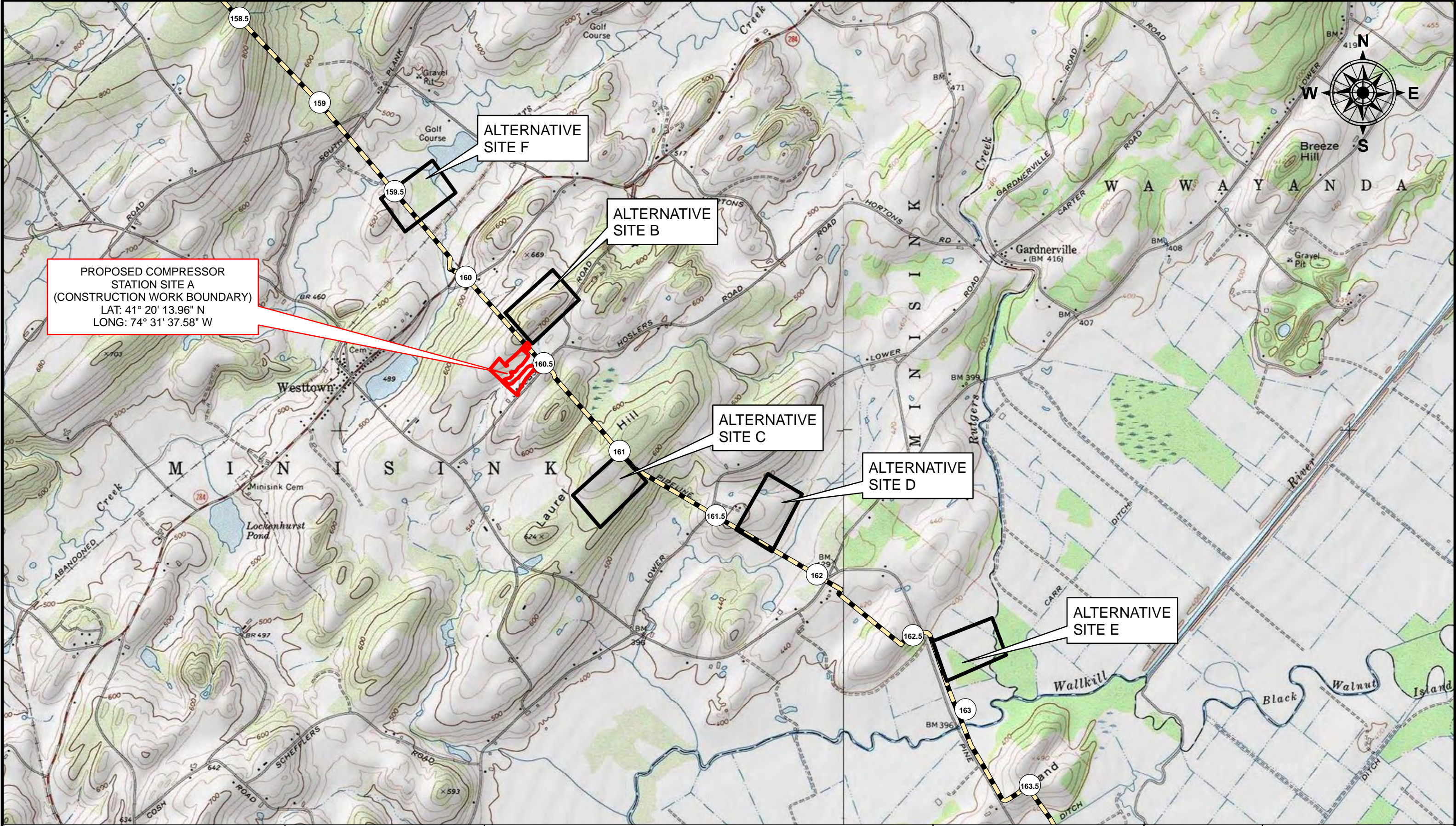


Map Document: (D:\GIS\Projects\Millennium\Data\Maps\Millennium_HMM_RR10_AlternativeMap_Preliminary_06/24/2011.mxd) 6/24/2011 -- 11:55:07 AM



PROPOSED COMPRESSOR STATION SITE A
(CONSTRUCTION WORK BOUNDARY)
LAT: 41° 20' 13.96" N
LONG: 74° 31' 37.58" W

ALTERNATIVE SITE F

ALTERNATIVE SITE B

ALTERNATIVE SITE C

ALTERNATIVE SITE D

ALTERNATIVE SITE E

Legend

- Existing Millennium Pipeline
- Proposed Site
- Milepost
- Alternative Sites

Source:
USGS Unionville, N.Y.- N.J.
Quadrangle. N4115-W7430/7.5, 1969;
USGS Pine Island, NY-NJ 1996

MILLENNIUM PIPELINE COMPANY, L.L.C.

MINISINK COMPRESSOR PROJECT
TOWN OF MINISINK, ORANGE COUNTY, NEW YORK
ALTERNATIVE COMPRESSOR STATION SITES
USGS QUAD MAP

1 IN = 2,000 FT

0 2,000 4,000
Feet

PRELIMINARY
06/24/2011

Hatch Mott MacDonald

27 Bleeker Street
Millburn, NJ 07041